



LEUVEN
LEUVEN



Patients acceptance of

UZ

Herestraat 49

www.uzleuven.be

UNIVERSITY HOSPITALS LEUVEN

a questionnaire

Nele Devoogdt, PT, PhD

UZ

Herestraat 49

www.uzleuven.be

UNIVERSITY HOSPITALS LEUVEN

BACKGROUND & PURPOSE

Background

- Studies about effect compression therapy:
 - General questionnaires, as SF36, NHP
 - Disease-specific questionnaires
 - Symptoms
 - Problems in functioning
 - Quality of life

Disease-specific questionnaires

- Lymphoedema
 - Lymph-ICF
 - LyQLI
 - FLQA-L
 - LYMQOL
 - ULL27
- DVT
 - Veines-QOL/ Sym
- CVI
 - CIVIQ
 - TLQ-CVI
- Ulcer
 - VLU-Qol
 - Wound-Qol

Problem

- No questionnaire available to assess:
 - Ease to put on/ remove compression
 - Comfort
 - Side-effects
 - Symptoms
 - Functioning

Purpose study

- Aim 1. Development of questionnaire to assess effect of compression therapy (RCT)

International Compression Questionnaire

Purpose study

- Aim 2. Investigate reliability and validity of International Compression Questionnaire

DEVELOPMENT QUESTIONNAIRE

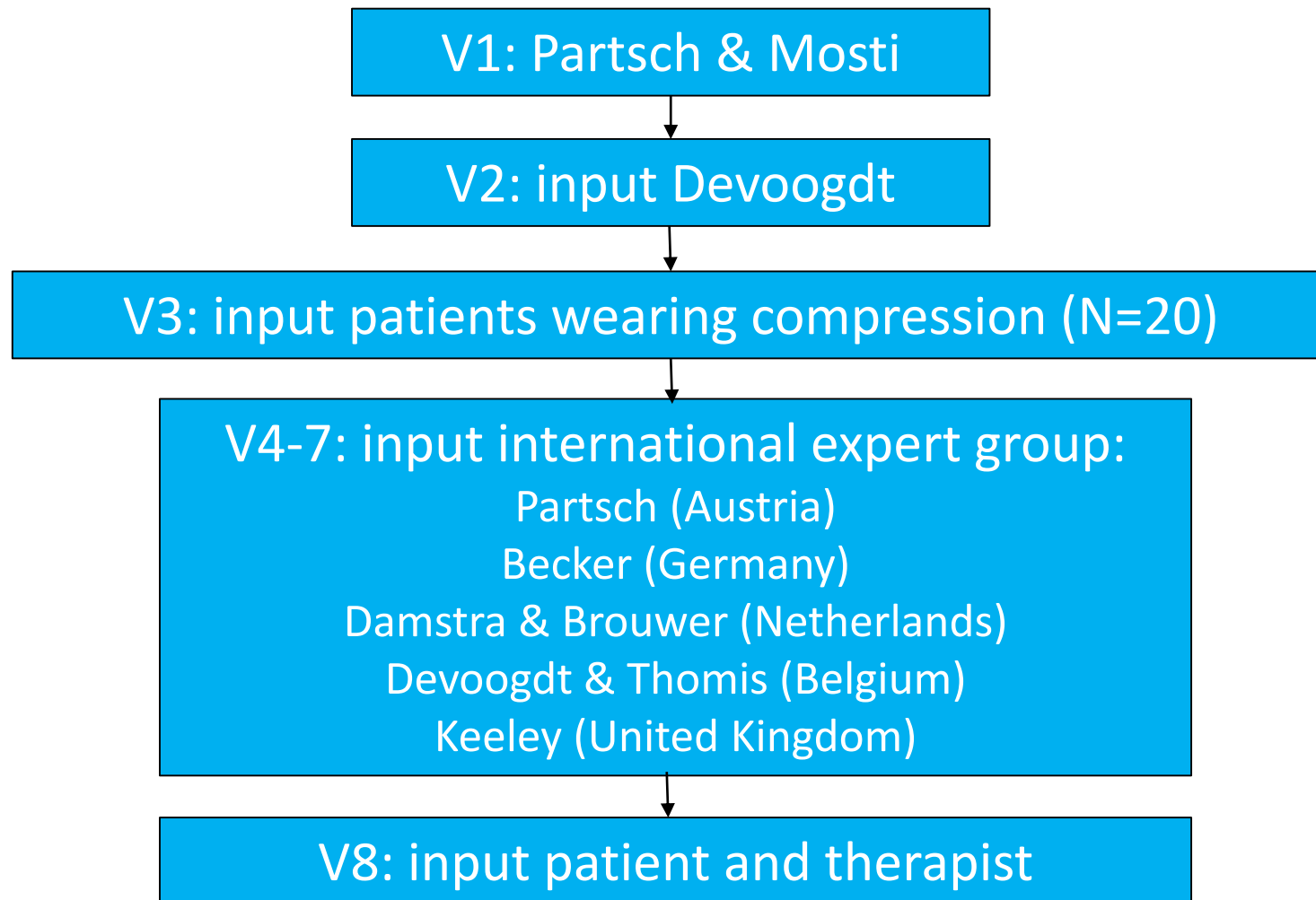
Methodology

Results

Methodology – development questionnaire

- Input from
 - Literature
 - Experts
 - Patients
- According to COSMIN rules

Results – development questionnaire



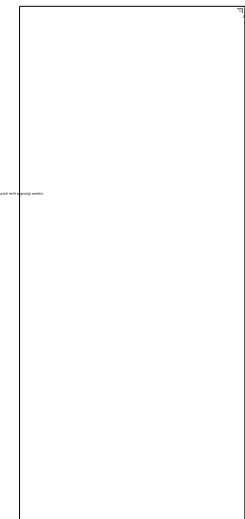
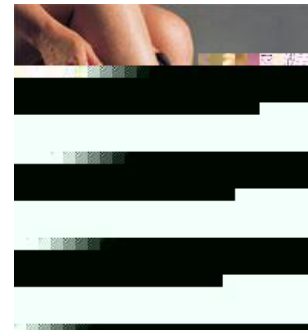
International Compression Questionnaire

- Language: English
- Questionnaire for patients
- Questionnaire for health care providers



Compression Questionnaire – for patients

- General questions
- Wearing time
- Ease of application/
removing compression
- Comfort
- Complications
- Physical functioning
- Symptoms



Compression Questionnaire – for health care providers

- Compression
 - to be tested
 - history of compression
- Covering limb
- Skin condition

An empty rectangular box with a thin black border, positioned to the right of the first two bullet points of the list.An empty rectangular box with a thin black border, positioned to the right of the last two bullet points of the list.

RELIABILITY AND VALIDITY QUESTIONNAIRE

Methodology

Results

Methodology

- Translation questionnaire in Dutch
- Inclusion:
 - 30 patients treated with compression
 - Recruited in University Hospitals Leuven, Belgium
 - Lymphoedema Center
 - dpt vascular surgery
 - dpt dermatology

Methodology

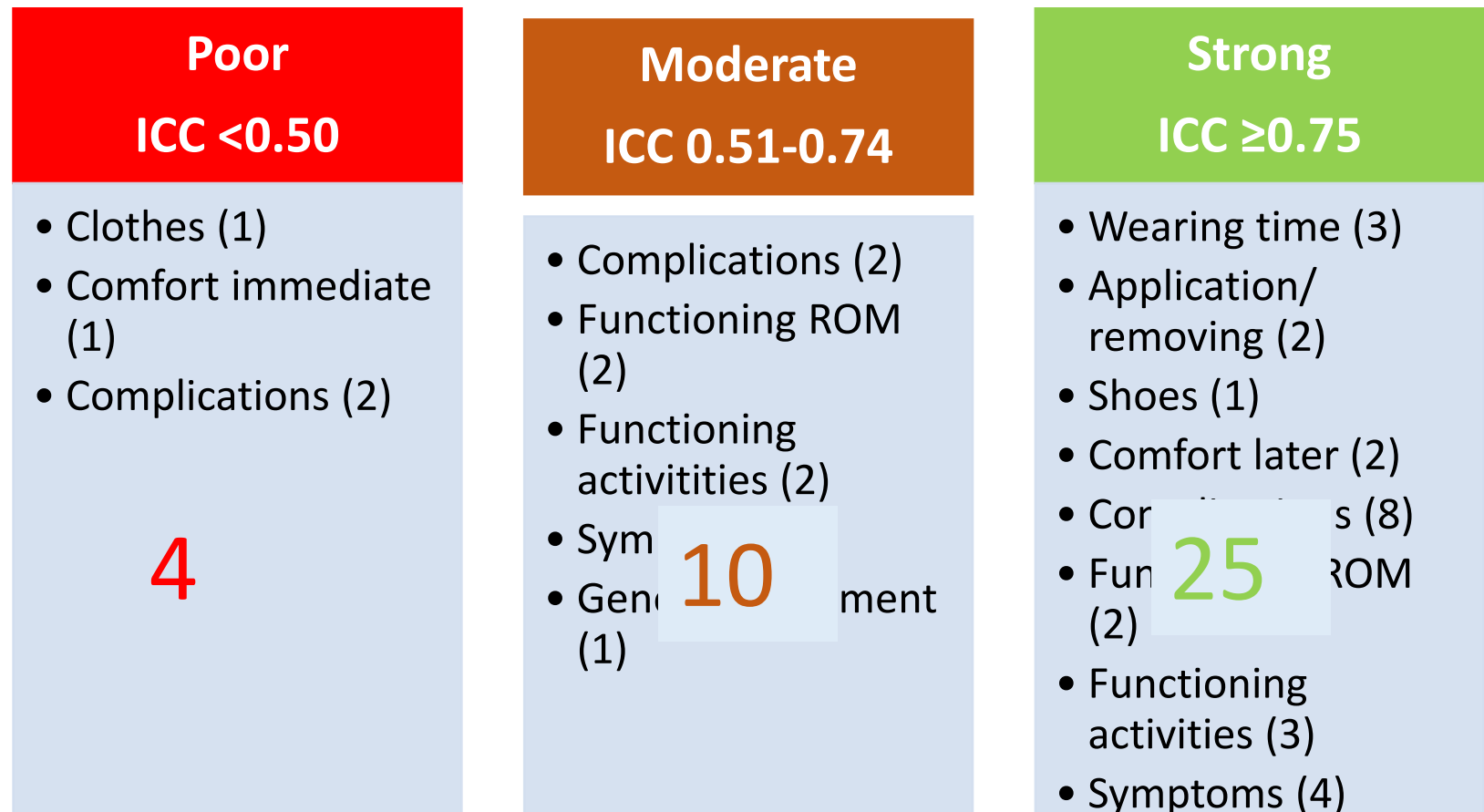
- Test-retest reliability:
 - compression questionnaire twice
- Face validity
 - questions and scoring system understandable
- Content validity
 - all aspects related to compression questioned
- Construct validity:
 - correlation with valid questionnaires (SF-36, Lymph-ICF, CIVIQ)

Results – subjects

- N=19 women, N=11 men
- Age 61 (44-77) y
- BMI 28 (20-37)

- N=16 lymphoedema, N=14 chronic venous insufficiency
- N=26 stockings, N=4 bandages
- Experience compression 1M – 55y

Results – reliability questionnaire for patients



Almost 90% of items: moderate to strong reliability

Results –validity questionnaire for patients

- Face validity: 80-97% understandable
- Content validity: 87-97% complete
- Construct validity:
 - Too small sample size

Results – reliability questionnaire for health care providers

- Covering limb ICC 0.11
- Skin condition
 - Strangulation ICC 0.35
 - Redness, erosion ICC 0.61, 0.68
 - Dryness, ulceration, dermatitis/ eczema
ICC 0.76-0.90
- Adherence ICC 0.48

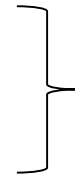
Solution to
add
pictures/
definition?

Only 62% of items: moderate to strong reliability

Results – validity questionnaire for health care providers

- Validity

- Face validity
- Content validity
- Construct validity



Help from audience??



Suggestions??



Mail you:

International Compression Questionnaire for health care providers

International Compression Questionnaire for patients

Questionnaire to describe health care provider

Questionnaire to assess face and content validity of

International Compression Questionnaire

Nele.devoogdt@uzleuven.be

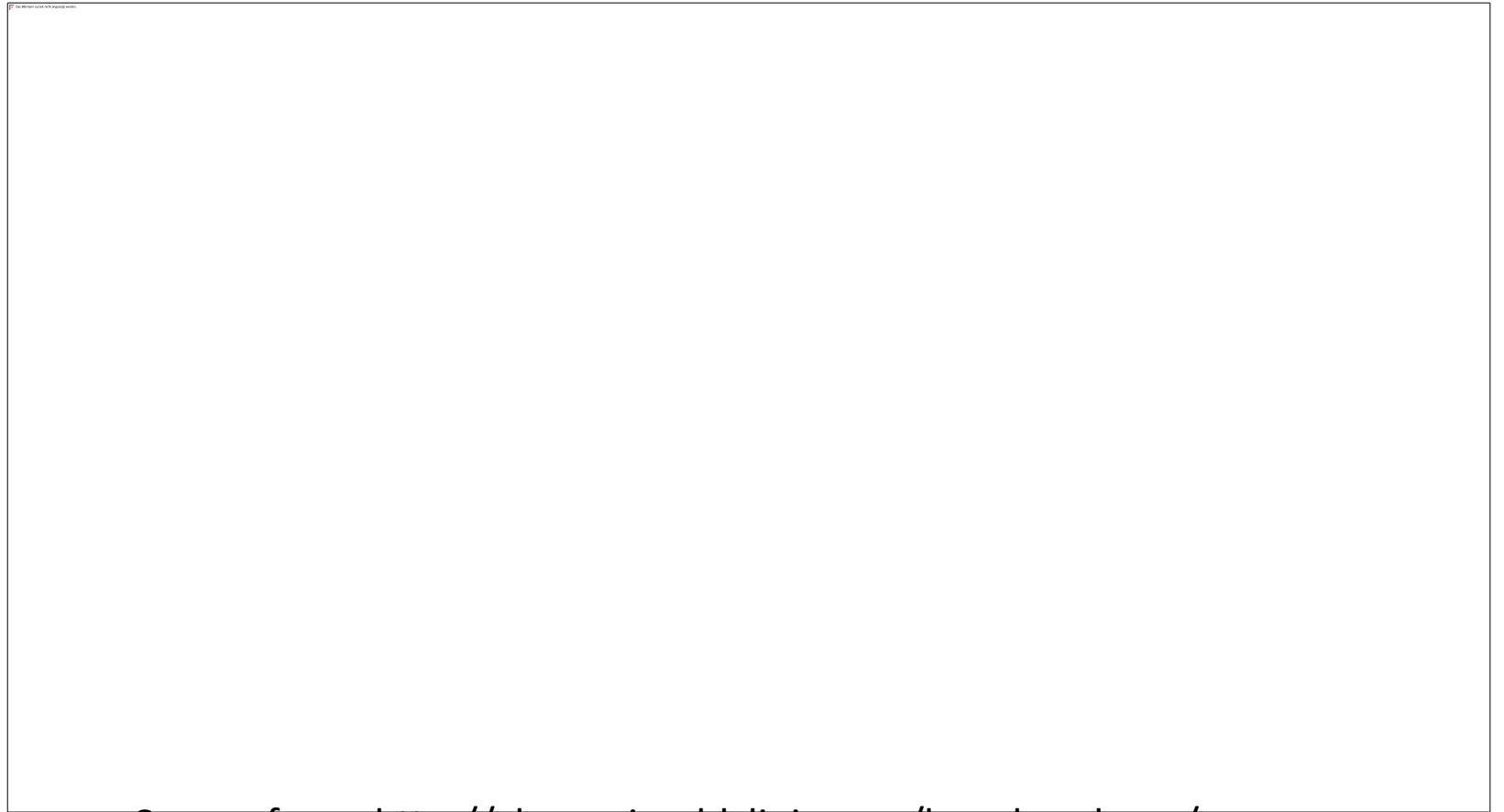
Conclusion

- International Compression Questionnaire – for patients
 - Good reliability
 - Good face and content validity
 - Construct validity?
- International Compression Questionnaire – for health care providers
 - Moderate reliability
 - Validity?

Future research

- Enlarge sample size:
 - Different kinds of compression therapy
 - For different diseases
- Construct validity
- Responsiveness

Thank you for your attention!!



Source from: <http://glasnevinmldclinic.com/lymphoedema/>